



Lighthouse Beacon News

lighthousequilters.org

January 2020

Lighthouse Quilt Guild

January 13, 2020

6:30 pm Social Time

7:00 pm Meeting

United Methodist Church of the Dunes

717 Sheldon, at Colfax

Grand Haven, Michigan

2019-2020 Executive Board

Co-Presidents

Jackie Baden

Carol Keen

Secretary

Linda Engel

Treasurer

Barb Dryer

Community Outreach Committee

Elizabeth Clark, Kim Frisch,

Annette Allen, Chris Bussell,

Nancy Cook, Diane Schlukibir,

Barb Wexall

Historian

Amy Stuparits

Hospitality

Jean Stordahl & Monica Leenhouts

Librarian

Marianne Stuparits

Membership-Bookkeeping

Christine Sinkiawic

Membership-Welcoming

Carol Keen, Marcia Knorr

and Kathy Schripsema

Newsletter

Barb Wexall

newsletter.lqg@gmail.com

Program Coordinators

Wendy Rice & Dianne Gustafson

Publicity

Jackie Baden

Quilt Show Coordinator

Amy Stuparits

Take-A-Chance

Alicia Gilewski

Vendors

Wendy Rice & Dianne Gustafson

Webpage Manager

Chris Bussell

Next Newsletter Deadline

January 20, 2020

Hello Quilters

January is here and the holidays are behind us. You may be ready to sort and organize your sewing room. Please think of me - and the boutique! I love all the donations you so generously give. I've been running the boutique since "forever" and fabric was at \$2.00 per yard long before I took the position. I believe it is time to adjust prices. We will be raising the prices of the quilting cottons to \$3.00 per yard. All other fabrics will remain at \$2.00 per yard. Patterns, books, magazines, and all other items will remain at the same pricing.

Our next quilt show will have the boutique back in our old room to the right of the entrance. It is a smaller room and we will not have the space of the last two years. I have also lost the contact for the major source of my "leftover" donations. They are no longer using certain types of items. I have contacted several other organizations and most are looking only for cottons. Therefore, I will not be accepting the following:

Clothing patterns, Trims/Zippers, etc.

Non-quilting fabric scraps (yardage is still acceptable)

Knitting or crochet patterns or supplies (but yes to yarn skeins. I have a source for that if there is any left behind.)

Apparel sewing tools such as hem gauges, marking papers, bias tape etc.

I hate to turn down donations but with limited space and nowhere to donate leftovers, I don't want to accept things that in the end are unuseable. So please, send me your castoffs but think "would I want to buy that?"

Thank you to all and have a happy and WARM holiday.

Leslie

Our next meeting is January 13th, and the next board meeting is January 21st at 6:30 pm in Room B in the Loutit Library

Upcoming Programs and Classes

Wendy Rice & Dianne Gustafson

Sign-up sheets and information for classes will be at the program table at each meeting. For questions, or program ideas, contact Wendy Rice 616-481-1755/ wendyrice49@gmail.com or Dianne Gustafson 616-844-1659/ bdgusto@comcast.net

LQG member Cyndi Phillip treated us to a charming presentation of her evolution as an eclectic quilter, illustrating her journey with a huge trunk show of quilts. She calls herself eclectic, but she is also remarkably prolific. There is almost no trend or discipline she has not tried, from the magnificent Sue Garman medallion quilt to a colorful jelly roll rug.

January 13, 2020:

Program: We will have a trunk show of approximately 50 pieces from the **Studio Art Quilt Associates (SAQA.)** These are art quilts from both well-known and emerging fiber artists, small enough to be passed around and carefully examined. Each show travels to different guilds and other venues for a year, after which the pieces are auctioned at a SAQA annual fundraiser.

February 10, 2020:

Program: LQG member **Karen Katje** will present a trunk show of her journey as a quilter. Karen will offer a **Pineapple Quilt Workshop:**

Workshop: Monday, February 10 from 10:30 am–4 pm. Fee for this class is just \$10 and fabrics from your stash. The Creative Grids Pineapple Trim Tool is required. Two ruler sizes are available and you can work with either the large or small ruler. Field's Fabrics needs your order by January 6 to insure you have it for class.

March 9, 2020:

Program: **Barb Bredemeier** and **Janet Haines** from Big Red in Holland. They will do a trunk show together, sharing the Tiled Background landscapes they learned on a quilting cruise with Australian designer Gloria Loughman, originator of the technique.

Workshop: Monday, March 9, 2020 10:30 am–4 pm. Learn to create a mosaic tiled background to enhance an applique landscape. Class fee is \$30. Barb offered a kit of supplies including her hand-dyed fabric for \$35, or you can work from your stash.

This workshop was limited to 20 people and filled very quickly. Barb and Janet agreed to take up to 10 more, so there are still a few spaces. Sign up ASAP!

April 13, 2020:

Program: **Fiber artist Sally Manke**, Sally is a multiple-time award winner at AQS and a popular workshop leader. Her "Blooming Windmill Quilt" was a top prize winner in 2018. Learn more about her at <http://sallymanke.com>.

Workshop: Sally has agreed to teach her newest **Landscape Confetti Art Quilt**, developed for her classes at AQS shows, and continually sold out. You'll create a colorful woodland scene with layered tiny bits of batiks and hand-dyed fabrics, "painting" on quilt batting.

Membership

Christine Sinkiawic

Cathi Waalkes and Susan Harper joined the Lighthouse Quilt Guild at our December meeting. Please give these ladies a warm welcome.

Quilt Show

Amy Stuparits

I am asking all guild members if they have a quilt representing the theme of "Bloom" or "Flowers" they think would be an option for a picture for our rack cards and posters to bring to the January meeting.

WE WILL HAVE A QUILT SHOW MEETING BEFORE THE JANUARY MEETING FOR THE QUILT SHOW COMMITTEE MEMBERS (AT 6PM)

I am still in need of a co-chair for this year's quilt show. If anyone is interested, please get in contact with me.

Community Outreach

Elizabeth Clark and Kim Frisch

We are planning a Baby Quilt Sew-In for Monday, February 17th (Presidents Day) to get a boost in our supply of quilts for Ottawa County's Maternal and Infant Health Program. We have scheduled the Wiltse Center at the Church of the Dunes from 9:00 am until 3:00 pm. We have planned a breakfast buffet to get our energy revved up. We will have baby quilt kits and a Wonky Donkey set-up, so all you will need to do is bring your sewing machine, a bag lunch, and your standard sewing supplies. We'll do the rest. Sign-up sheets will be circulated at our January and February Guild meetings or call Elizabeth at (616) 212-0844 to reserve a spot.

Hospitality

Jean Stordahl

Once again we say "Thank you" to all of you for your generosity. We had three tables packed with appetizers and desserts last month. Wow!!
January birthday people, it is your turn to bring something to share. We look forward to your tempting treats.

Spring Retreat

Sue Doyle and Amanda Garvin

Lighthouse Quilt Guild Spring Retreat: April 24, 25 and 26, 2019, at the Christian Reformed Conference Grounds located south of Grand Haven on Lakeshore Drive. Three fun days to just quilt and relax! We sew in a large center with plenty of light and a cozy fireplace. Lunch and dinner are included on Friday and Saturday with only lunch served on Sunday as we must be out of the center by 3:00 pm. The retreat opens at 9:00 am on Friday and you can sew as late as you wish. PLEASE DO NOT SHOW UP PRIOR TO 9:00 am on Friday as we need to setup first. Saturday and Sunday the room is open at 8:00 am. You have a choice of signing up for attending days only for \$70.00 or you may wish to stay over Friday and Saturday nights in one of the lovely cabins for \$130.00. To hold your spot for the retreat, make a \$20.00 (non-refundable) payment at the February meeting (sign up asap at the meeting as we fill up fast). Please make checks payable to Lighthouse Quilt Guild. You must be a member in good standing to register for the retreat. Balance of payment will be due at or by the April meeting. We are limited to signing up a max of 32 people.



Classes, Camps and Workshops
Wool: Yardage & Hand Dyed
For Rug Hooking
and Wool Appliqué
Wool Yarn, Wool Cutouts
Patterns and Kits
for Rug Hooking, Punching and Appliqué

Full brick and mortar shop call for appointments
Chris Hornby - 616-566-1144

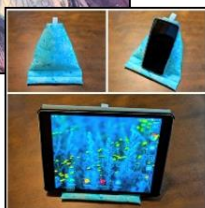
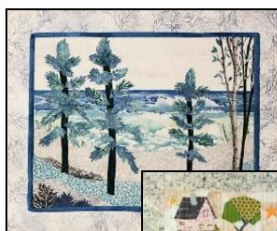
*A Quilter treasures life's moments
 one stitch at a time.
 She knows the joy of patiently creating
 a work of art that can only grow
 more precious with the gift of years.
 She tells a beautiful story
 with patterns and colors, and
 the patchwork of her life is
 woven with threads
 of laughter and tears, memories and dreams.
 A Quilter understands the value
 of preserving the past
 and has a heart gentle enough to stitch
 the gift of love into our lives for the future.
 A Quilter knows the blessing
 of treasuring life's moments one stitch at a time.
 Author Unknown*



Knowledgeable People Fun Classes Great Sewing Machines
www.lakeshoresewing.com

Meet the Teachers Open House - Thurs., Jan. 9; 4 - 6 PM

Check out all our new classes and save \$ on classes & supplies!



Discount for Guild Members

Show us this ad and receive 15% off your total purchase of regularly priced items.

Offer not applicable to classes.

LQG Jan. 2020

**Lighthouse Quilt Guild
Treasurer's Report
as of 11/30/2019**

	November	Year to Date	Annual Budget
INCOME			
Community Outreach Income		447.45	300.00
Interest Income	0.72	2.19	10.00
Membership Dues	120.00	920.00	3,000.00
Miscellaneous Income			300.00
Newsletter Advertising Income			500.00
Newsletter Member Fees Income	10.00	40.00	100.00
Program Guest Fees	10.00	110.00	50.00
Quilt Raffle Ticket Sales (2019)		378.00	1,500.00
Quilt Show Income			6,500.00
Retreat Income	540.00	2,240.00	7,000.00
Take a Chance Income	52.25	97.25	500.00
Workshop Income		1,765.00	4,000.00
Total Income	732.97	5,999.89	23,760.00
EXPENSES			
Administrative Expenses	122.00	163.70	250.00
Community Outreach Expenses	24.95	24.95	1,000.00
Facility Rental			1,000.00
Hospitality Expenses		35.94	50.00
Library Expenses	40.52	40.52	300.00
Membership Expenses			150.00
Miscellaneous Expenses	11.00	11.00	100.00
Newsletter Expenses		115.00	600.00
Program Expenses	338.03	1,953.88	7,000.00
Quilt Raffle Expenses		1,819.00	1,800.00
Quilt Show Expenses		750.00	3,000.00
Retreat Expenses			7,000.00
Take a Chance Expenses		71.75	500.00
Technology Expenses			750.00
Workshop Expense		1,700.00	4,000.00
Total Expenses	536.50	6,685.74	27,500.00
General Fund Balance	23,127.75		
Program Reserve Balance	1,000.00		
Equipment Reserve Balance	3,000.00		
	27,127.75		
LQG Assets as of 11/30/2019			
Checking	9,543.20		
outstanding checks	(24.95)		
Petty Cash (Membership)	30.00		
Savings	17,579.50		
	27,127.75		



*Longarm Quilting
Statler Stitcher*

Darla Parks
13548 Greenbriar Dr.
Grand Haven, MI 49417
(616) 607-8122

ElegantStitchesLongarmQuilting@yahoo.com
www.elegantstitchesmi.com
Sales Representative for Accomplish Quilting,
Authorized Gammill Dealer

**Note: Weather Related
Meeting Cancellations**

If Grand Haven Public Schools cancel school or evening school events due to weather, then there will be no meeting for the Lighthouse Quilt Guild. If the schools do not cancel events but conditions are deemed hazardous to our members, an announcement of cancellation will be sent to the WGHN radio station and TV 8 or 13. You can also call the guild or co-chairs to seek advice on road conditions here in Grand Haven.



Lighthouse Quilt Guild
PO Box 852
Grand Haven, MI 49417

Your January Lighthouse Quilt Guild Newsletter is here

What to Bring to the Next Meeting:

- ~ Your Name Badge (pin it on!)—this is your entry to the meeting
- ~ Completed Community Outreach quilts
- ~ Spare Change for Take A Chance
- ~ Library Books
- ~ Show and Tell

Next Board Meeting: Tuesday, January 21, 2020
Room B, Loutit District Library 6:30 pm

